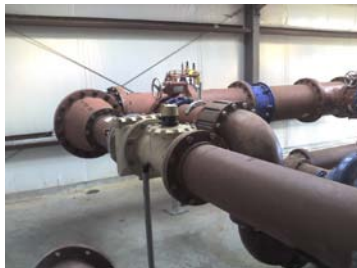


Lamar County Water Supply District - Western System Booster Pump Station



In 2007 Hayter Engineering prepared the application for LCWSD to apply to the Texas Water Development Board for a low interest loan from the Drinking Water State Revolving Fund to address the need for more pumping, storage, and transmission capacity. The LCWSD's existing distribution system connections to the City of Paris system were not adequate for the projected peak day demand for the western half of the LCWSD system.

Particular improvements included a new booster pump station with three pumps – each with a capacity of 2,100 gallons per minute, yard piping, electrical, and controls.

This project was part of a larger project which also included a new 500,000 gallon ground storage tank and a 16" transmission main.

Service provided by Hayter Engineering are listed at right.

This project was completed in 2009.

CLIENT

Lamar County Water Supply District
(LCWSD)

CONTACT

David Pitcock, Manager
Telephone: (903) 785-5586
E-mail: dwpitcock@yahoo.com

CONSTRUCTION COST:

\$716,262.89.

SERVICES PROVIDED:

Financial Advisor
Bond Counsel Procurement
Site Acquisition
Civil Design
Cost Estimating
Design & Property Surveying
Environmental Assessment
Electrical Design
Construction Bid & Award
Construction Review
Record Drawings
One-Year Warranty Review